

MATTHEW JAMES
Property Services



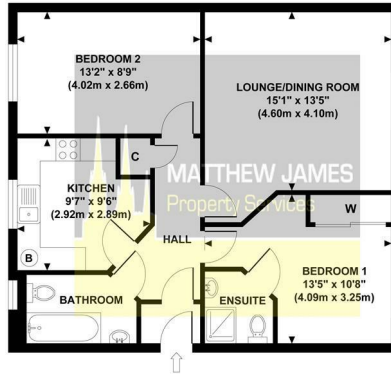
27 The Avenue, Coventry, CV3 4BF
Offers Over £145,000



Floor Plan

HARLEQUIN COURT

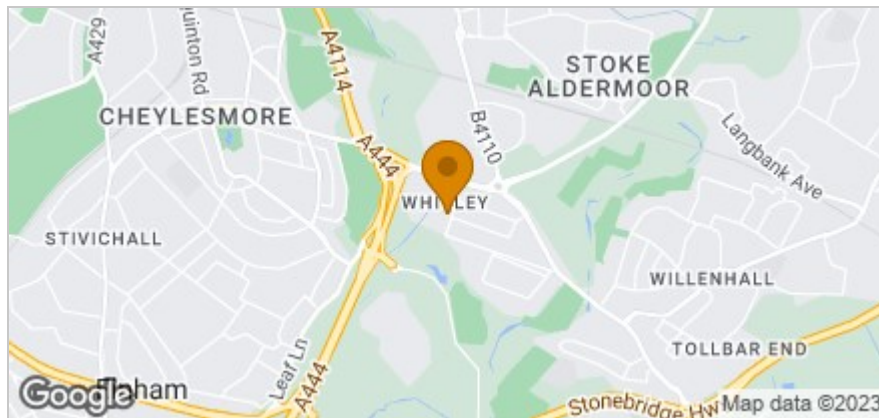
Approximate Gross Internal Area
621 sq ft / 57.70 sq m



GROSS INTERNAL
FLOOR AREA 621 SQ FT

Although every attempt has been made to ensure accuracy, all measurements are approximate and no responsibility is taken for any error, omission, or mis-statement. This floor plan is for illustrative purposes only and not to scale. Measured in accordance to RICS standards.

Area Map



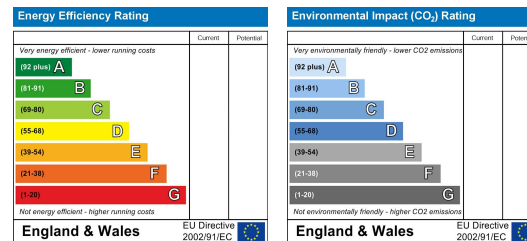
Accommodation

- ***MODERN APARTMENT***
- ***SECOND FLOOR***
- ***MASTER BEROOM ENSUITE***
- *** FITTED BATHROOM***
- *** FITTED KITCHEN***
- ***LARGE LOUNGE/ DINING***
- *** ALLOCATED PARKING/VISITOR PARKING***
- ***CLOSE TO JLR WHITLEY***
- ***WALKING DISTANCE TO LOCAL SUPERMARKET/SCHOOLS***
- ***IDEAL INVESTMENT/ FIRST TIME BUYERS PROPERTY***

Viewing

Please contact us on 02477 170170 if you wish to arrange a viewing appointment for this property or require further information.

Energy Efficiency Graph



These particulars, whilst believed to be accurate are set out as a general outline only for guidance and do not constitute any part of an offer or contract. Intending purchasers should not rely on them as statements of representation of fact, but must satisfy themselves by inspection or otherwise as to their accuracy. No person in this firm's employment has the authority to make or give any representation or warranty in respect of the property.

CONTACT INFORMATION

📍 24a Warwick Row, Coventry CV1 1EY

☎ 02477 170170

✉ info@matthewjames.uk.com

🌐 www.matthewjames.uk.com

📘 Facebook

🐦 Twitter